

IFI Mapping Activities (Analysis Report)

Based on the submitted questionnaires by the IFI partners- July 2008

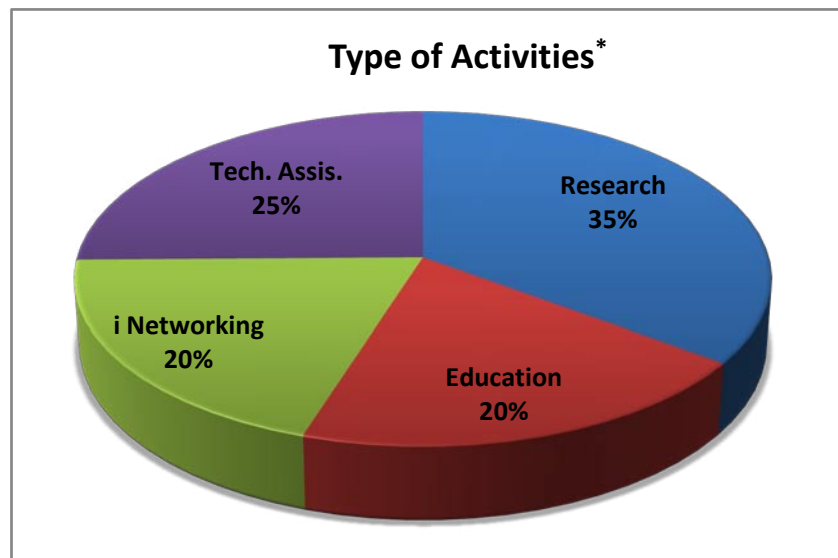
1. Introduction

The IFI mapping activities are prepared based on the reports submitted by the IFI partners. In total 51 activities are submitted to the IFI secretariat at ICHARM by UNESCO, WMO, UN/ISDR, UNU, IAHS, IAHR, ICLR and ICHARM. This is a draft report to identify the IFI activities' overlaps and gaps. This will help the IFI partners to propose an IFI Action Plan. However this is not a final version and the IFI overlaps and gaps are open for discussion. The list of the all submitted activities with brief information of each activity is also prepared in a separate Excel file. The original input files and analysis reports are available at:

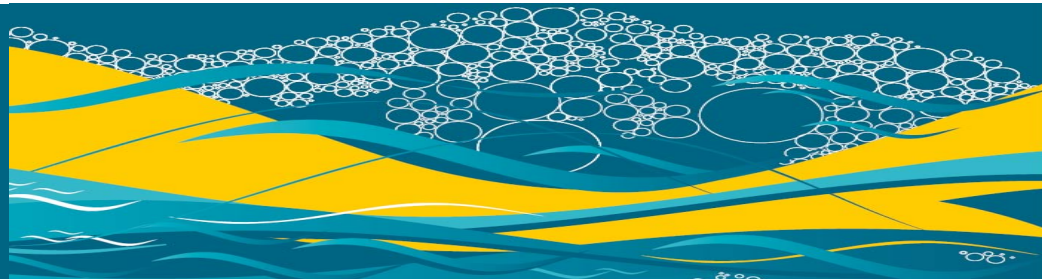
<http://www.ifi-home.info/Login.html>

2. Types of Activities *

Research activities are in the top priority for the IFI partners with 35% of the total activities followed by Technical Assistance with 25% of the total activities.

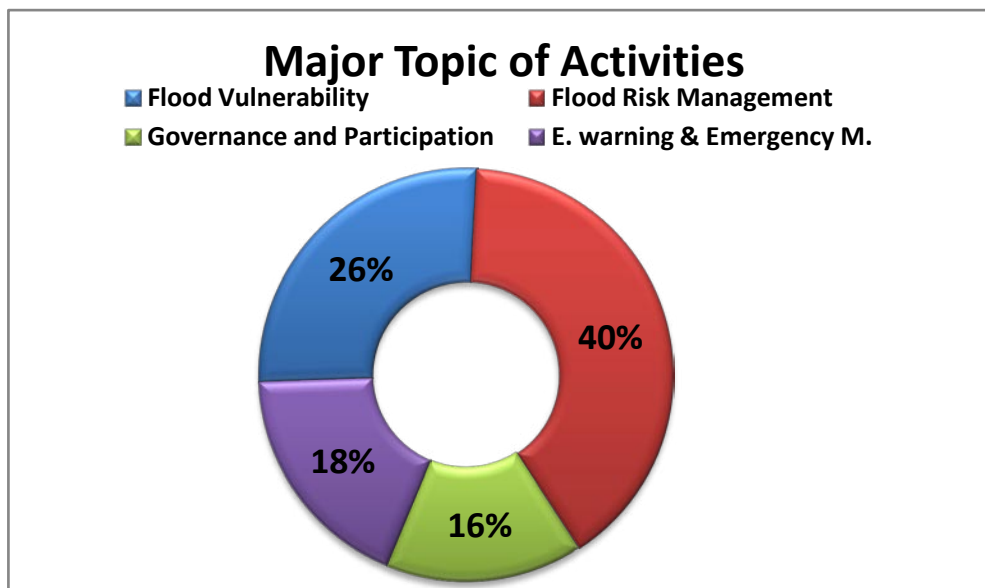


*In most cases an activity is covering more than one topic, type and geographic scope. Therefore in this report the percentage demonstrate the relative weight of a particular type or topic compared with the others.

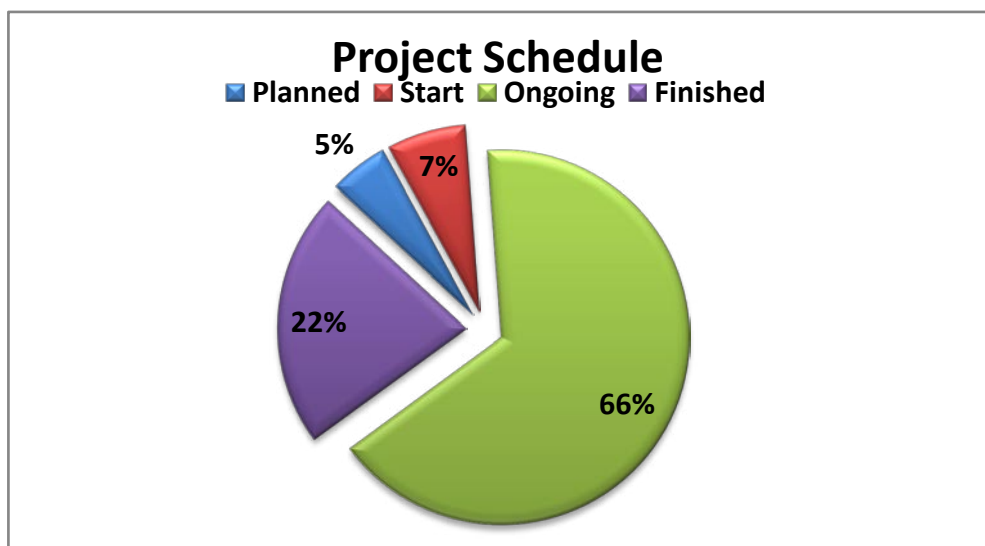


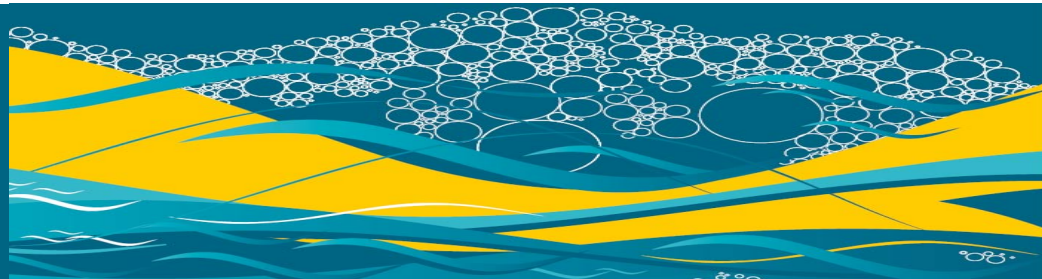
3. Major Topic of Activities

Flood Risk Management is the most popular topic with 40% of the activities. Of course, it is a general topic and most of the IFI activities can be categorized in this topic. However, three other topics were specifically named. Governance and Participation activities have received less attention among the IFI partners with only 16% of the total activities.



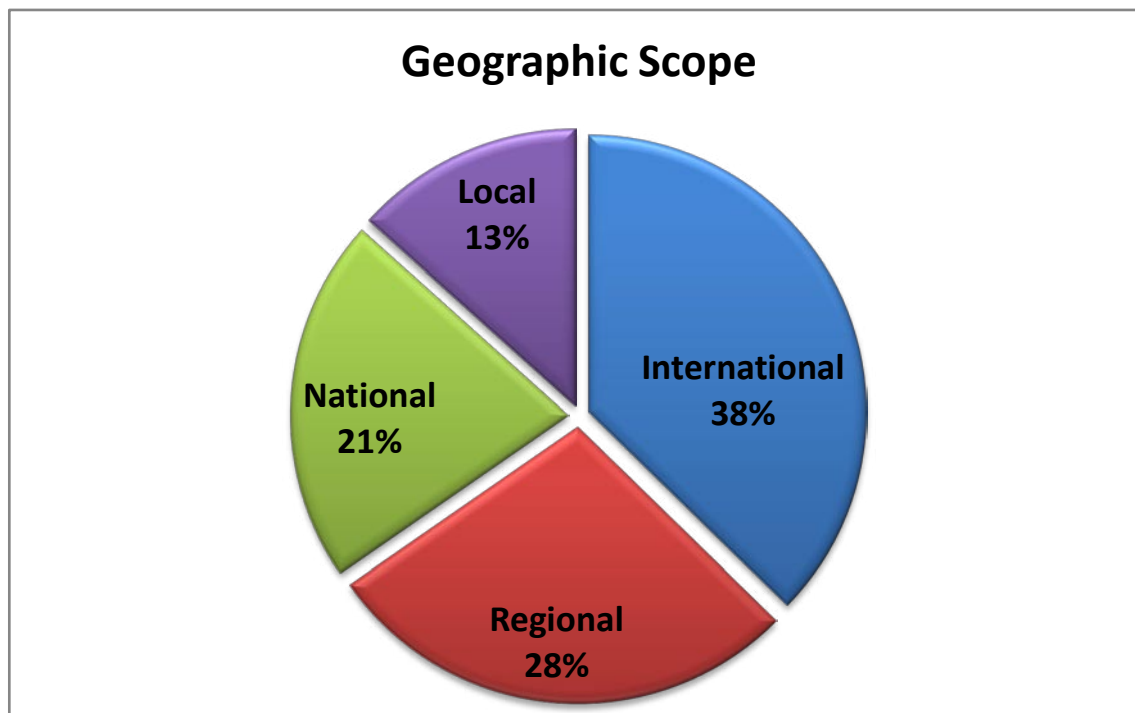
4. Type of Activities





5. Geographic Scope

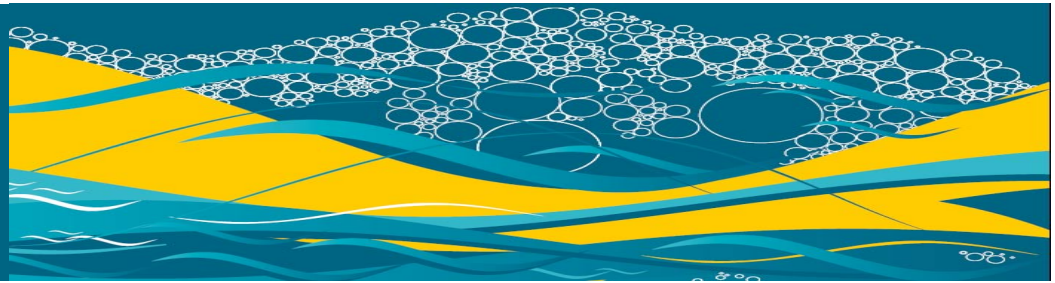
Two-thirds (66%) of the activities are either at the international or regional level. Twenty-one percent of the activities are at the national level.



6. Overlaps

Finding overlaps using the submitted reports is somehow a difficult task since there is not that much detail of the activities. However the following is an example of the several activities with the main focus on large floods and extreme events:

UNESCO	Techniques for extreme rainfall and flood runoff estimation (NE – FRIEND)
ICHARM	Large-scale Flood Report Project
UNU	Project DISFLOOD: Disaster Information System for Large-Scale Flood Events Using Earth Observation
UNU	Case studies of extreme floods
IAHS	World Catalogue of Maximum Observed Floods
IAHS	Hydrological Extremes: Understanding; Predicting, Mitigating
IAHS	Compendium of Extreme Floods



7. Gaps

Considering the IFI concept paper and an integrated approach to flood management, the following is the list of some gaps in the IFI-related activities. The list categorizes in the four topics (Vulnerability, Flood Risk Management, Governance and Participation and Early Warning and Emergency Management).

	Vulnerability
Research	Indicator development
Training	
i Networking	
Technical Assistant	Estimating economic impacts including benefit of floods for various land uses
	Flood Risk Management
Research	Flash flood in urban area
Training	
i Networking	Compilation of available global coverage spatial datasets in the appropriate resolution and format for flood management
Technical Assistant	
	Governance and Participation
Research	Flood disaster preparedness standard and manuals
Training	Promotion of the public awareness on concept of living with floods
i Networking	Network between IFI and relief and humanitarian agencies
Technical Assistant	Provide assistance to government in designing national strategies for flood damage reduction
	Early Warning and Emergency Management
Research	Methodology for reliable and effective inundation mapping
Training	Response to warning
i Networking	Effective communication
Technical Assistant	